



announces openings for:

*** * * TROMBONE * * ***
(Section)

The Southeastern Pennsylvania Symphony Orchestra under Music Director Allan R. Scott has an annual concert season of 4 Masterworks Concerts and 4 Chamber Music Concerts per season, with generally 1-3 rehearsals the week of the concert. SPSO is a per service orchestra contracted each Season.

Start Date: when openings exist or to be put on substitute list
Reports to: Music Director and Personnel Managers
Length of Season: September to May
Audition Date: Scheduled as Requested or Needed
 Please contact staff members to schedule an audition:
 Winds / Brass / Percussion / Keyboard: Beth beth@spsorchestra.org
 Strings: Monica monica@spsorchestra.org

AUDITION

The Southeastern Pennsylvania Symphony Orchestra encourages talented and dedicated musicians to audition. Musicians are judged on musicianship, preparation, tone quality, and proficiency on their instrument. The Audition Committee consists of the Music Director, any assistant conductor, and principal members of the section(s) or instrument family (i.e. winds), and at times, other members from that section. Prior to the audition, the candidate must complete the Audition Information Form as well as review the Rehearsal & Performance Schedule.

The Audition consists of the following – **PLEASE READ:**

- * Prepared unaccompanied solo; 2 minutes in length to demonstrate instrument proficiency, tone quality, technique, and virtuosity (need not be memorized). **Solo choices are listed below.**
- * Several prepared excerpts (listed below) that are assigned to demonstrate musician's preparation ability (Excerpts are available online via IMSLP or www.orchestraexcerpts.com, along with recorded examples.)
 - * Number of audition rounds will be determined by the number of qualified candidates.
 - * A pre-screening may occur depending on the number of qualified candidates.
 - * Candidates may be asked to sight read
 - * Final round may include non-blind audition and an interview with the Audition Committee.

Solo: Choice of Solo (no more than 2 minutes)

Excerpts: All excerpts should be prepared. Audition Committee will choose which excerpts are played at the audition:

Orchestral Excerpts – Tenor Trombone:

BERLIOZ	<i>The Damnation of Faust</i> (Trb. II)	Hungarian March: 1 before Reh. 4 to 4 m. after Reh. 5
MOZART	Requiem (Tenor Trombone)	Tuba mirum – solo (entire movement)
RAVEL	<i>Bolero</i> (Trb. I)	Solo (2 m. after Reh. 10 to Reh. 11)
ROSSINI	<i>William Tell</i> : Overture (Trb. I)	Reh. C to 8 m. after Reh. D
SAINT-SÄENS	Symphony No. 3, <i>Organ</i> (Trb. I)	Movement I: Reg. Q to 2 m. after Reh. R
		Movement I: 11 m. after Reh. R to 1 m. after Reh. S
WAGNER	<i>Tannhauser</i> : Overture (Trb. I)	Reh. A to 27 m. before Reh. B

Orchestral Excerpts – Bass Trombone:

HINDEMITH	<i>Mathis der Maler</i>	Movement I: 1 m. before Reh. 4 to 5 m. after Reh. 2
RESPIGHI	<i>Fountains of Rome</i>	La Fontana di Valle Giulia all'alba
		5 m. before Reh. 11 to 5 m. before Reh. 16
ROSSINI	<i>William Tell</i> : Overture	Reh. C to 9 m. after Reh. D
WAGNER	<i>Tannhauser</i> : Overture	Reh. A to 27 m. before Reh. B

Berlioz - Hungarian March

Excerpt 1 - 1 measure before [4] to 3 measures after [5]

Trombone 1

Viol. 19 *mf cresc.* *ff* *ff*

4 5

SCORE



Trombone 2

poco cresc. 1 *mf cresc.* *ff* *ff*

4 5

Excerpt 1 - Tuba mirum: Beginning to [B]
Tenor Trombone

Andante.
Solo.

3. Tuba mirum.

1

5

p

f

5 c 11 d 12



The image shows a page of musical notation, likely a manuscript or a printed score, featuring a series of staves with a large 'X' drawn across them. The notation includes various musical symbols such as notes, rests, and dynamic markings like 'Allegro' and 'Adagio'. The 'X' is drawn across the entire page, from the top left to the bottom right, and from the top right to the bottom left, intersecting in the center. The musical notation is in a single system, with the key signature changing from one key to another. The tempo markings 'Allegro' and 'Adagio' are placed at the beginning and end of the piece, respectively. The notation is in a single system, with the key signature changing from one key to another. The tempo markings 'Allegro' and 'Adagio' are placed at the beginning and end of the piece, respectively.



BOLERO

MAURICE RAVEL

1^{er} et 2^e TROMBONES

9

TACET jusqu'à 10

H^{tb}

10

1^o Solo

mf sostenuto

11

17 12 18 13 10

pte Fl

Rossini - William Tell

Excerpt 1 - Overture: [C] to 8 measures after [D]

Tenor Trombone 1

Score for Tenor Trombone 1, Excerpt 1 - Overture: [C] to 8 measures after [D]. The score is written on seven staves in 2/4 time, key of D major. It begins with a C-clef and a forte (f) dynamic. The music features a mix of eighth and sixteenth notes, with some measures containing rests. A large bracket is placed over the sixth staff, and a '1' is written above the first measure of the seventh staff.

SCORE



Saint-Saëns - Symphony No. 3

- * Excerpt 1 - Movement I: [Q] to 2 measures before [R]
- * Excerpt 2 - Movement I: 11 measures after [R] to 1 measure after [S]

Trombone 1

Poco adagio

Orgue

1^{re} V^{as}

Altos

Velles

Q

1^{er} Tromb.

p

poco cresc.

2

R 8

Orgue

1^{er} Tromb.

p

S

T 9

U 6

Orgue

pp

SCORE



SCORE



Wagner - Tannhäuser

Excerpt 1 - Overture: [A] to 27 measures before [B]

Trombone 1

Andante maestoso (♩ = 50)

Klar. I

29

06 Klar.

SCORE



37 **A**

f *ff*

43

3

49

3

27 **B** Allegro (♩ = 80)

31

Detailed description: This image shows a musical score for Trombone 1 from Wagner's Tannhäuser Overture. The score is divided into two main sections, A and B. Section A begins at measure 37 and is marked 'Andante maestoso (♩ = 50)'. It features a key signature of three sharps (F#, C#, G#) and a 3/4 time signature. The music is written for Trombone 1, with dynamics ranging from *f* (forte) to *ff* (fortissimo). Section B begins at measure 27 and is marked 'Allegro (♩ = 80)'. It also features a key signature of three sharps and a 3/4 time signature. The music is written for Trombone 1, with dynamics ranging from *f* (forte) to *ff* (fortissimo). The score includes a QR code labeled 'SCORE' and a page number '31' at the bottom right.

Symphonie Mathis der Maler

I Engelkonzert

Ruhig bewegt: d. etwa 66) 1. Fl.

Singen drei Engel

b.p. [1] b.p. p p p
mp sanfter vorzutreten

cresc.

[2]

f

3 6

dim. p pp

Ziemlich lebhaft Halbte d. 108-112)

8 [3] 7 mf 1 1

[4] 5 mf 1

[5] 6 einleiten Ruhig 8

[6] 9 [7] 13 [8] 8 1. Pos.
mp cresc.

[9] 12 2 2 7 [10] 10

[11] 16 Triangel 1 4 [12] 14

pp

Ottorino Respighi Fountains of Rome

TROMBONE 3^o

La fontana di Valle Giulia all'alba.

Poco più mosso Tempo 1^o

Andante mosso



La fontana del Tritone al mattino.

Vivo

3

3

4

4

2

6

(Tromboni)



Un poco mosso

(Allegretto)

10

Più vivo

(gaiamente)

15

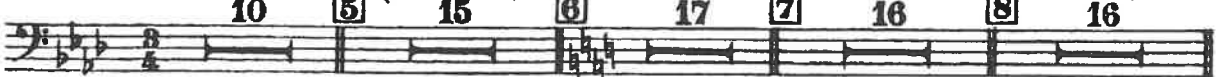
17

Più vivo ancora

16

(Tromboni)

16



La fontana di Trevi al meriggio.

All^o moderato

9

15

10

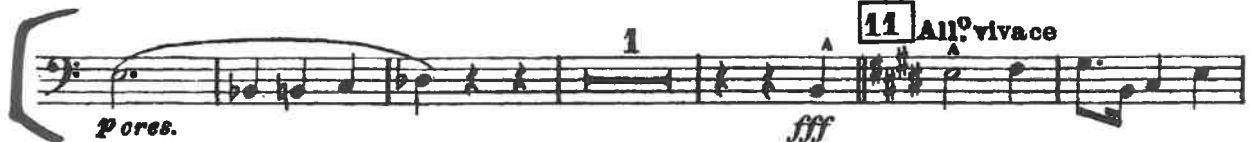
2

un poco rall.

pp

cres.

f



TROMBONE 3^o

8

13

14 Più vivace
(In uno)

ff (Ritmo di 3 battute) *ff*

1 2

più f

1 2

15

fff (Ritmo di 4 battute)

Largamente

fff *fff*

dim. *mf dim.*

16

4

p *tacet al fine*

17 Calmo

6 16

La fontana di Villa Medici al tramonto.

And^{te} come prima

18 Andante 12 **19** Meno mosso 16 **20** 11 **21** 10

22 16 **23** 10

Bass Trombone

92 **C**

98

103

108

115

121 **D**

130

SCORE



Trombone 2

Andante maestoso (♩ = 50)

29

Ob. Klar.

Klar. I

3

32

A

f ff

43

49

27

B Allegro (♩ = 80)

31

SCORE



Trombone 3

Andante maestoso (♩ = 50)

29

Ob. Klar.

Klar. I

3

37

A

f ff

44

51

27

B Allegro (♩ = 80)

30

Bratsche